

# Showcase



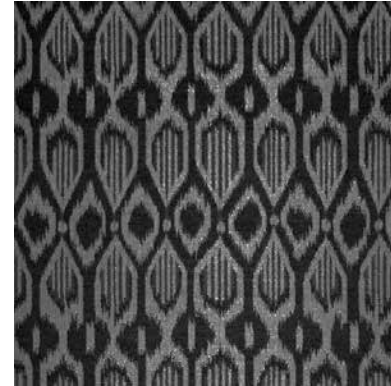
# Showcase

# Collection

## Eaton Custom Seating

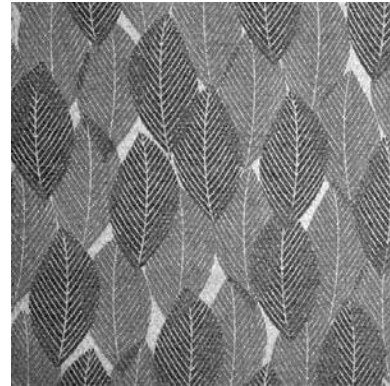
Full Repeat Detail

Align



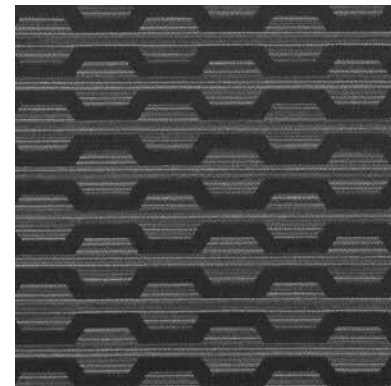
Multiple repeats shown.  
Actual repeat: H - 7.25" and V - 7.125"

Branch Out



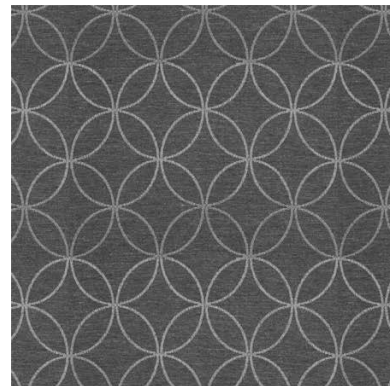
Multiple repeats shown.  
Actual repeat: H - 14.4375" and V - 15.5"

Caption



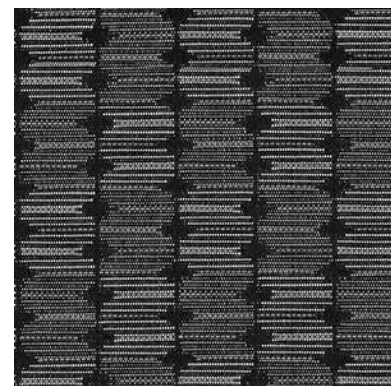
Multiple repeats shown.  
Actual repeat: H - 2.5" and V - 5.375"

Guru



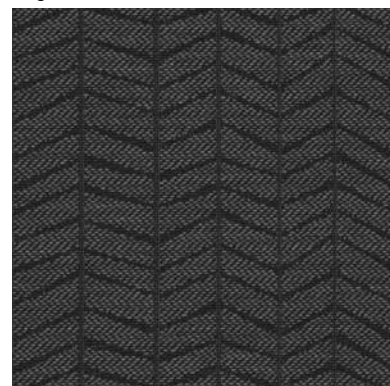
Multiple repeats shown.  
Actual repeat: H - 3.625" and V - 3.625"

Nirvana



Multiple repeats shown.  
Actual repeat: H - 2.875" V - 2.0"

Segment



Multiple repeats shown.  
Actual repeat: H - 4.875" and V - 2.375"

# Showcase

	Content	Weight Per Lin Yd	Finish / Backing	Directional / Railroaded	Repeat	Abrasion	Flammability*	Cleaning Code
<b>Align</b>	51% Acrylic, 49% Polyester	16.3 oz /lin yd	Crypton®	Yes / No	H - 7.25" V - 7.125"	50,000 Double Rubs	Cal. TB 117 NFPA 260 Class 1 UFAC Class 1	W
<b>Blade</b>	51% Acrylic, 49% Polyester	14.5 oz /lin yd	Crypton®	Yes / No	H - 4.875" V - 4.75"	50,000 Double Rubs	Cal. TB 117 NFPA 260 Class 1 UFAC Class 1	W
<b>Branch Out</b>	51% Acrylic, 49% Polyester	14.9 oz /lin yd	Crypton®	Yes / No	H - 14.4375" V - 15.5"	100,000 Double Rubs	Cal. TB 117 NFPA 260 Class 1 UFAC Class 1	W
<b>Caption</b>	51% Acrylic, 49% Polyester	14.7 oz /lin yd	Crypton®	Yes / No	H - 2.5" V - 5.375"	50,000 Double Rubs	Cal. TB 117 NFPA 260 Class 1 UFAC Class 1	W
<b>Grove</b>	51% Acrylic, 49% Polyester	15.0 oz /lin yd	Crypton®	Yes / No	H - 2.0" V - 0.75"	50,000 Double Rubs	Cal. TB 117 NFPA 260 Class 1 UFAC Class 1	W
<b>Guru</b>	53% Acrylic, 47% Polyester	14.9 oz /lin yd	Crypton®	Yes / No	H - 3.625" V - 3.625"	50,000 Double Rubs	Cal. TB 117 NFPA 260 Class 1 UFAC Class 1	W
<b>Hybrid</b>	67% Polyester, 33% Acrylic	14.3 oz /lin yd	Crypton®	Yes / Yes	V - 2.8125"	50,000 Double Rubs	Cal. TB 117 NFPA 260 Class 1 UFAC Class 1	W
<b>Milano</b>	100% Polyester	25.2 oz /lin yd	Crypton®	Yes / No	N / A	50,000 Double Rubs	Cal. TB 117 NFPA 260 Class 1 UFAC Class 1	W / Bleach Cleanable
<b>Nirvana</b>	51% Acrylic, 49% Polyester	14.9 oz /lin yd	Crypton®	Yes / No	H - 7.25" V - 5.75"	50,000 Double Rubs	Cal. TB 117 NFPA 260 Class 1 UFAC Class 1	W
<b>Segment</b>	51% Acrylic, 49% Polyester	16.9 oz /lin yd	Crypton®	Yes / No	N / A	50,000 Double Rubs	Cal. TB 117 NFPA 260 Class 1 UFAC Class 1	W
<b>Velour</b>	100% Polyester	20.6 oz /lin yd	Crypton®	Yes / No	H - 7.25" V - 12.125"	100,000 Double Rubs	Cal. TB 117 NFPA 260 Class 1 UFAC Class 1	W / Bleach Cleanable

Roll Width - 54"

Please visit our website [www.burchfabrics.com](http://www.burchfabrics.com) for full specification information as well as cleaning guidelines.

All patterns in this collection meet or exceed ACT® Performance Guidelines.



Crypton Technology is GREENGUARD Gold Certified.

**\*Flammability:** This term and any corresponding data refer to the typical performance in the specific tests indicated and should not be construed to imply the behavior of this or any other material under actual fire conditions. Dye lots may vary from samples shown. Final determination of the suitability of this product for an application rests with the user. Proposition 65 Warning: This product may contain chemicals known to the State of California to cause cancer, birth defects and other reproductive harm.

## Eaton Custom Seating

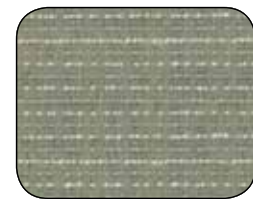
263 Coffee Street  
Pontotoc, MS 38863-2612  
p 662.489.4242  
f 662.489.2611

[www.eatonseating.com](http://www.eatonseating.com)

Additional colorways are available for all patterns shown.



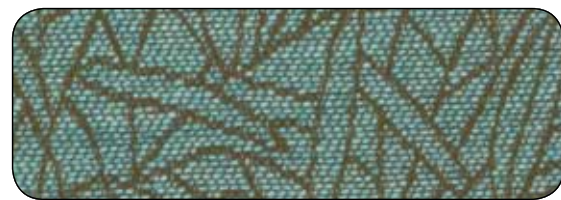
Hybrid  
1007180 Aspen



Grove  
1007171 Periwinkle



Guru  
1006909 Sky



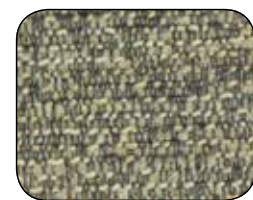
Blade  
1007202 Caribbean



Caption  
1006819 Jade



Milano  
1007743 Amalfi



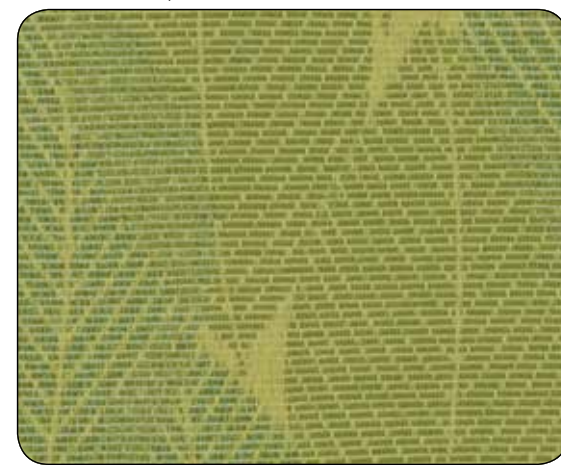
Milano  
1007753 Gravel



Branch Out  
1007193 Opal



Caption  
1006818 Avocado



Branch Out  
1007194 Pear



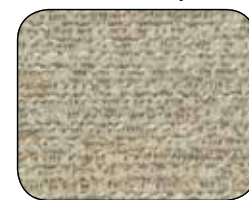
Segment  
1007158 Citron



Hybrid  
1007183 Sky



Velour  
1007507 Clover



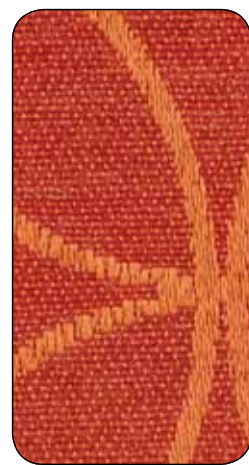
Milano  
1007751 Foghorn



Milano  
1007742 Fennel



Align  
1007221 Sunset



Guru  
1006916 Burnt Orange



Hybrid  
1007186 Poppy



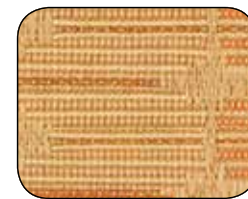
Caption  
1006822 Truffle



Milano  
1007741 Marigold



Milano  
1007740 Saffron



Nirvana  
1006812 Amber



Velour  
1007499 Coral



Segment  
1007155 Harvest



Guru  
1006915 Fireside



Velour  
1007513 Sepia



Hybrid  
1007189 Java



Milano  
1007739 Flamenco



Nirvana  
1006815 Chocolate



Milano  
1007748 Blackout



Velour  
1007515 Natural



Segment  
1007161 Plaster



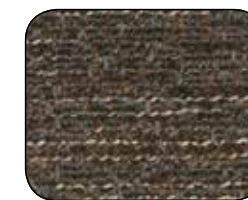
Caption  
1006816 Malt



Hybrid  
1007182 Dijon



Grove  
1007172 Walnut



Milano  
1007746 Mudslide



Align  
1007227 Alabaster



Branch Out  
1007191 Flax



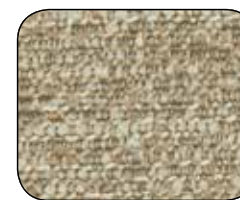
Hybrid  
1007181 Bamboo



Guru  
1006910 Haze



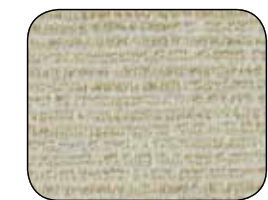
Milano  
1007747 Portobello



Milano  
1007750 Irish Cream



Blade  
1007201 Stone



Milano  
1007752 Oatmeal

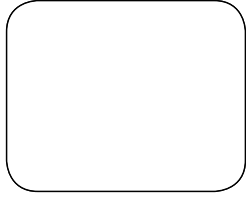




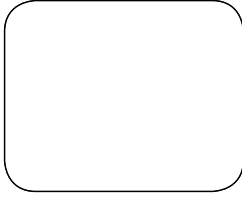




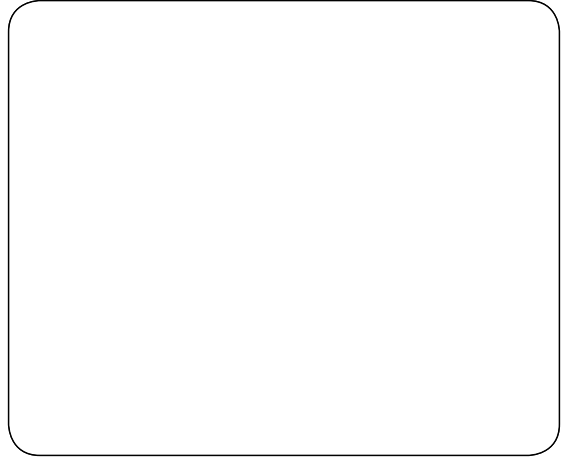




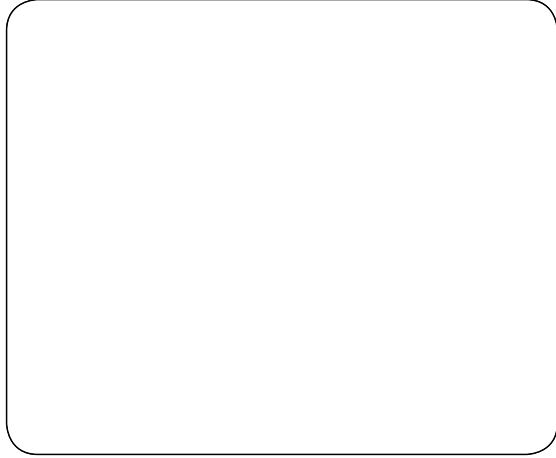
**Velour**  
1007515 Natural



**Segment**  
1007161 Plaster



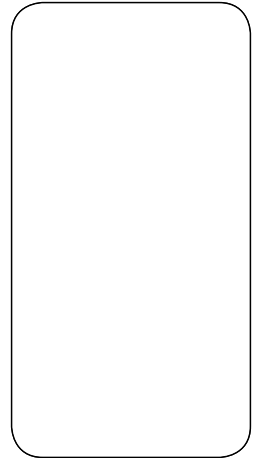
**Align**  
1007227 Alabaster



**Caption**  
1006816 Malt



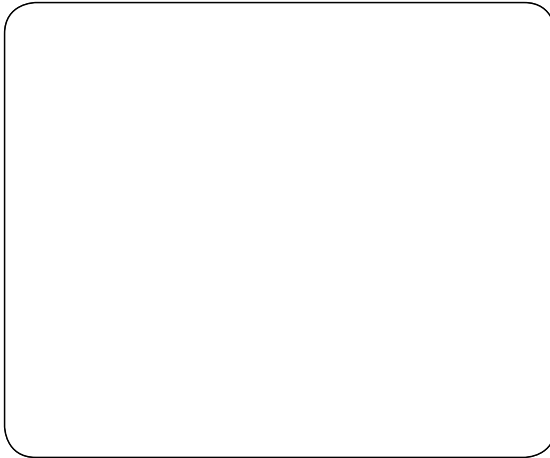
**Branch Out**  
1007191 Flax



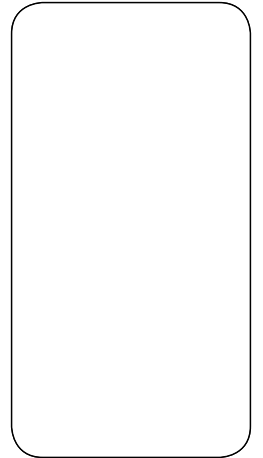
**Hybrid**  
1007181 Bamboo



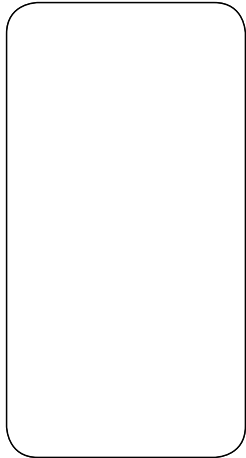
**Hybrid**  
1007182 Dijon



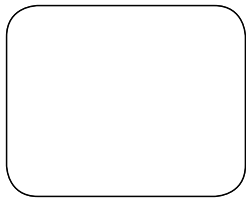
**Guru**  
1006910 Haze



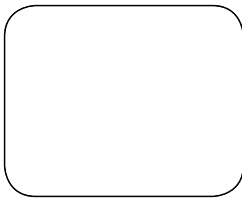
**Blade**  
1007201 Stone



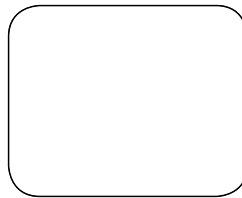
**Grove**  
1007172 Walnut



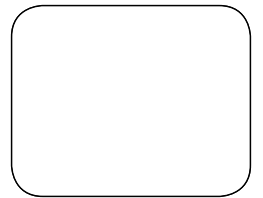
**Milano**  
1007746 Mudslide



**Milano**  
1007747 Portobello



**Milano**  
1007750 Irish Cream



**Milano**  
1007752 Oatmeal