




# Landscape Collection

## Eaton Custom Seating

	Content	Weight Per Lin Yd	Finish / Backing	Directional / Railroaded	Repeat	Abrasion	Flammability*	Cleaning Code
<b>Lattice</b>	62% Polyester, 22% P.C. Recycled Polyester, 16% P.I. Recycled Polyester	13.1 oz.	Crypton®	Yes / No	H - 1.875" V - 1.75"	90,000 Double Rubs	Cal. TB 117-2013 NFPA 260 Class 1 UFAC Class 1	W / Bleach Cleanable*
<b>Sprout</b>	100% Polyester	14.7 oz.	Crypton®	Yes / Yes	H - 7.5" H - 4.0"	80,000 Double Rubs	Cal. TB 117-2013 NFPA 260 Class 1 UFAC Class 1	W / Bleach Cleanable*
<b>Thrive</b>	100% Polyester	12.42 oz.	Crypton®	Yes / Yes	H - 4.75"	75,000 Double Rubs	Cal. TB 117-2013 NFPA 260 Class 1 UFAC Class 1	W / Bleach Cleanable*
 <b>Vine</b>	49% Polyester, 35% P.C. Recycled Polyester, 16% P.I. Recycled Polyester	13.7 oz.	Crypton® Green	Yes / No	H - 5.0" V - 9.938"	100,000 Double Rubs	Cal. TB 117-2013 NFPA 260 Class 1 UFAC Class 1	W / Bleach Cleanable*

Roll Width - 54"

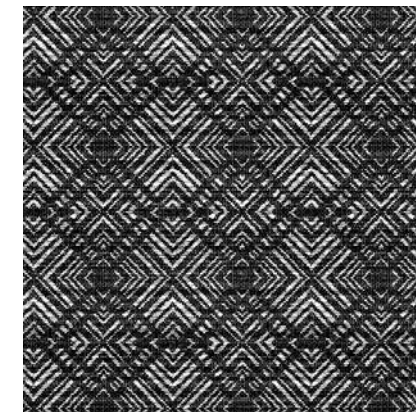
\***Bleach Cleanable:** 90% Water / 10% Bleach Solution

Please visit our website [www.burchfabrics.com](http://www.burchfabrics.com) for full specification information as well as cleaning guidelines.

All patterns in this collection **meet or exceed** ACT® Performance Guidelines.




**Lattice** Full Repeat Detail



Multiple repeats shown.  
Actual repeat: H - 1.875" and V - 1.75"

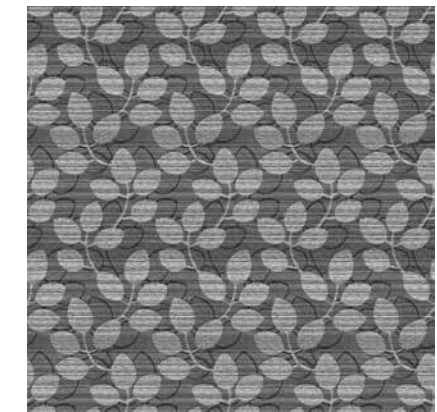


Crypton Technology is GREENGUARD Gold Certified.

 The pattern **Vine** provides fabric options for reducing a negative impact on the environment.

\***Flammability:** This term and any corresponding data refer to the typical performance in the specific tests indicated and should not be construed to imply the behavior of this or any other material under actual fire conditions. Dye lots may vary from samples shown. Final determination of the suitability of this product for an application rests with the user. Proposition 65 Warning: This product may contain chemicals known to the State of California to cause cancer, birth defects and other reproductive harm.

**Vine** Full Repeat Detail



Multiple repeats shown.  
Actual repeat: H - 5.0" and V - 9.938"

# Landscape

## Eaton Custom Seating

263 Coffee Street  
Pontotoc, MS 38863-2612  
p 662.489.4242  
f 662.489.2611

[www.eatonseating.com](http://www.eatonseating.com)



## Vine 🍷



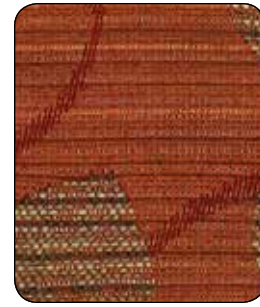
1008217 Red Curry



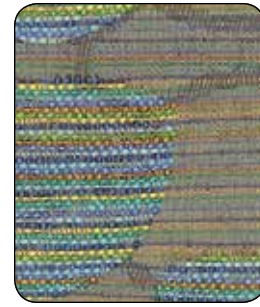
1008223 Ginger



1008221 Ivy



1008217 Red Curry



1008220 Calypso



1008222 Aluminum



1008216 Brandywine



1008218 Ruby



1008219 Anchor Blue

## Thrive



1008213 Sand Dune



1008212 Mango Tango



1008209 Hibiscus



1008211 Artichoke



1008214 Spiced



1008210 Sea Turtle



1008215 Copper Mine



1008208 Ink

## Lattice



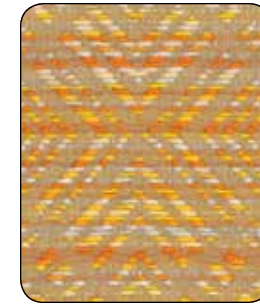
1008194 Henna



1008199 Coconut



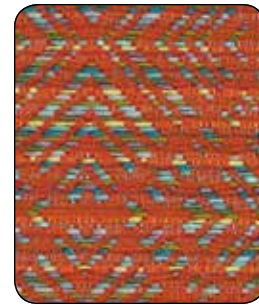
1008197 Splash



1008198 Golden Sunrise



1008196 Indigo



1008194 Henna



1008195 Heirloom

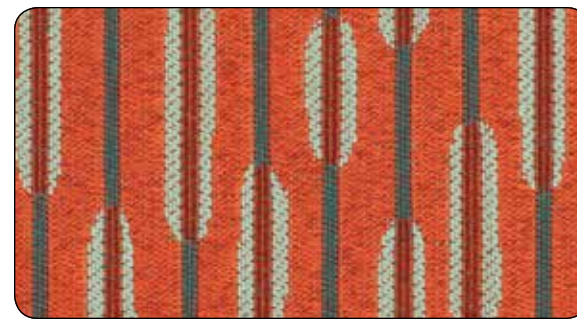


1008193 Chestnut



1008200 Blackout

## Sprout



1008204 Garnet



1008207 Champagne



1008201 Peapod



1008205 Iris



1008202 Raindrop



1008203 Black Silk



*Eaton Custom Seating*


---

**Landscape**  
Collection

---

# Landscape Collection



	Content	Weight Per Lin Yd	Finish / Backing	Directional / Railroaded	Repeat	Abrasion	Flammability*	Cleaning Code
<b>Lattice</b>	62% Polyester, 22% P.C. Recycled Polyester, 16% P.I. Recycled Polyester	13.1 oz.	Crypton®	Yes / No	H - 1.875" V - 1.75"	90,000 Double Rubs	Cal. TB 117-2013 NFPA 260 Class 1 UFAC Class 1	W / Bleach Cleanable*
<b>Sprout</b>	100% Polyester	14.7 oz.	Crypton®	Yes / Yes	H - 7.5" H - 4.0"	80,000 Double Rubs	Cal. TB 117-2013 NFPA 260 Class 1 UFAC Class 1	W / Bleach Cleanable*
<b>Thrive</b>	100% Polyester	12.42 oz.	Crypton®	Yes / Yes	H - 4.75"	75,000 Double Rubs	Cal. TB 117-2013 NFPA 260 Class 1 UFAC Class 1	W / Bleach Cleanable*
 <b>Vine</b>	49% Polyester, 35% P.C. Recycled Polyester, 16% P.I. Recycled Polyester	13.7 oz.	Crypton® Green	Yes / No	H - 5.0" V - 9.938"	100,000 Double Rubs	Cal. TB 117-2013 NFPA 260 Class 1 UFAC Class 1	W / Bleach Cleanable*

Roll Width - 54"

\***Bleach Cleanable:** 90% Water / 10% Bleach Solution

Please visit our website [www.burchfabrics.com](http://www.burchfabrics.com) for full specification information as well as cleaning guidelines.

All patterns in this collection **meet or exceed** ACT® Performance Guidelines.



\*ACT® Registered Certification Marks



Crypton Technology is GREENGUARD Gold Certified.



The pattern **Vine** provides fabric options for reducing a negative impact on the environment.

\***Flammability:** This term and any corresponding data refer to the typical performance in the specific tests indicated and should not be construed to imply the behavior of this or any other material under actual fire conditions.

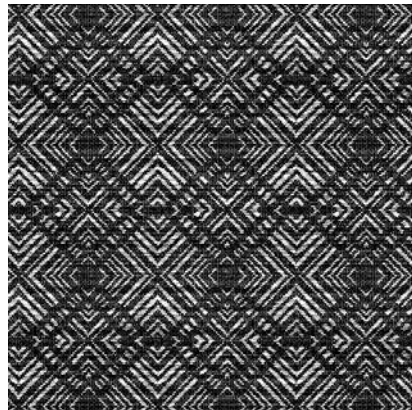
Dye lots may vary from samples shown. Final determination of the suitability of this product for an application rests with the user.

Proposition 65 Warning: This product may contain chemicals known to the State of California to cause cancer, birth defects and other reproductive harm.



**Lattice**

Full Repeat Detail

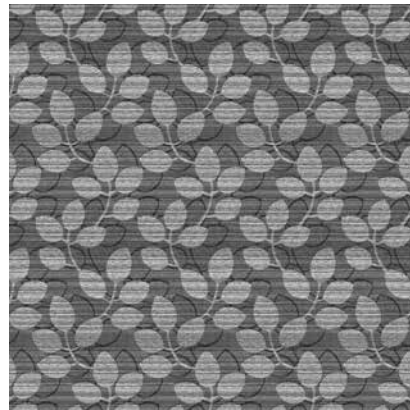


Multiple repeats shown.

Actual repeat: H - 1.875" and V - 1.75"

**Vine**

Full Repeat Detail



Multiple repeats shown.

Actual repeat: H - 5.0" and V - 9.938"

## Eaton Custom Seating

263 Coffee Street  
Pontotoc, MS 38863-2612

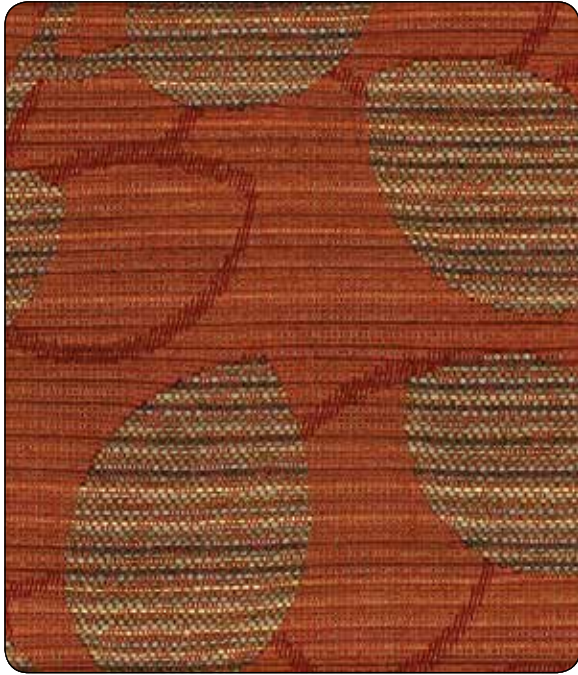
**p** 662.489.4242

**f** 662.489.2611

[www.eatonseating.com](http://www.eatonseating.com)



## Vine 🌿



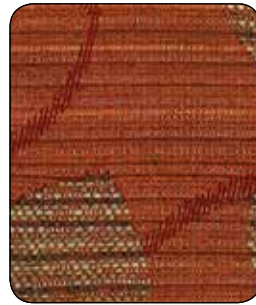
1008217 Red Curry



1008223 Ginger



1008221 Ivy



1008217 Red Curry



1008220 Calypso



1008222 Aluminum



1008216 Brandywine



1008218 Ruby



1008219 Anchor Blue

## Thrive



1008213 Sand Dune



1008212 Mango Tango



1008209 Hibiscus



1008211 Artichoke



1008214 Spiced



1008210 Sea Turtle



1008215 Copper Mine



1008208 Ink



## Lattice



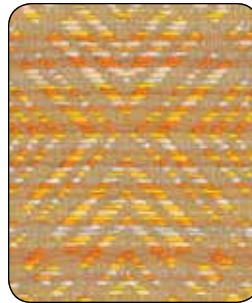
1008194 Henna



1008199 Coconut



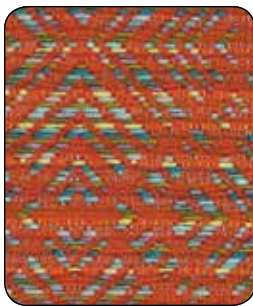
1008197 Splash



1008198 Golden Sunrise



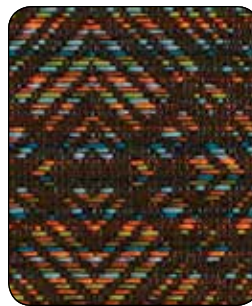
1008196 Indigo



1008194 Henna



1008195 Heirloom



1008193 Chestnut



1008200 Blackout

## Sprout



1008204 Garnet



1008207 Champagne



1008206 Grounded



1008201 Peapod



1008205 Iris



1008202 Raindrop



1008203 Black Silk